

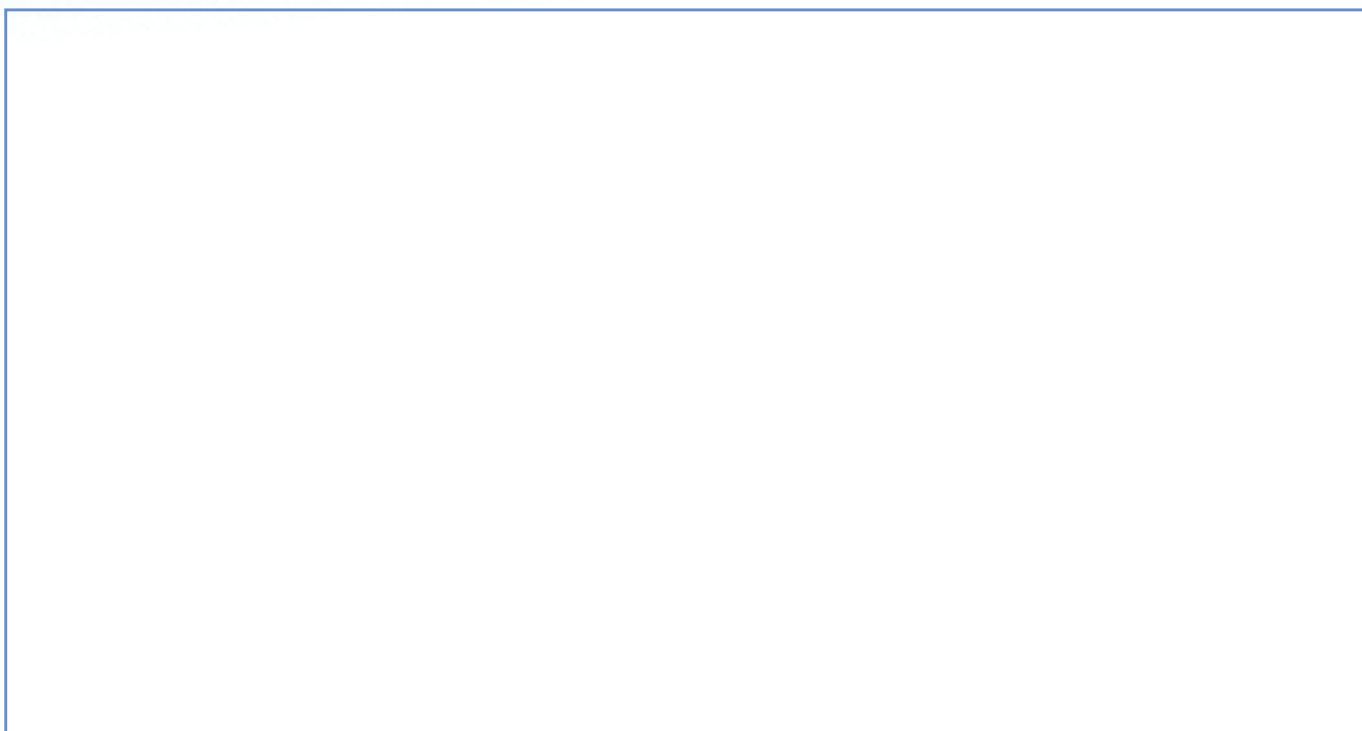
PRODUCT DESCRIPTION:

PS_1_58

PRODUCT CODE:

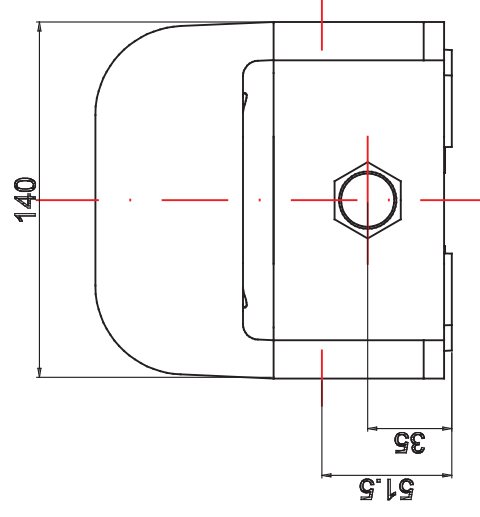
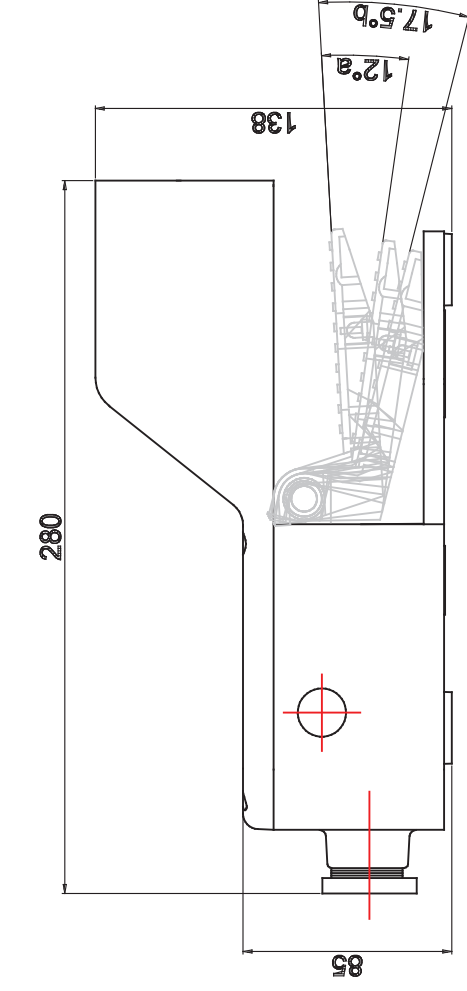
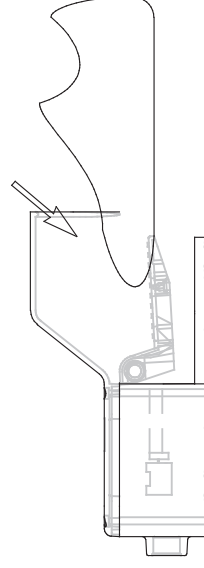
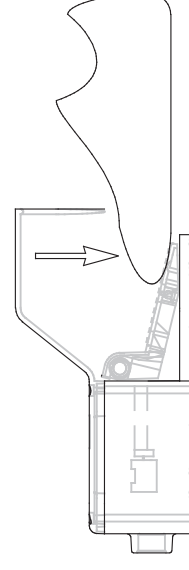
PS2115

DYNAMIC 3D VIEW:



STATIC 3D VIEW:



TECHNICAL VIEW:**1****CONTATTO OFF****CONTATTO ON**

DETAILS:

Code	PS2115
Casing Material	Abs
Class II - Double insulation	M20 cable gland
IP protection rating	65
Operating head	plastic lever with double actuator
Microswitch	1 (NO + NC) snap action
Approvals	CE, IMQ, UL, EAC, CSA, CCC
Reference Directives	LVD - 2014/35/EU
Reference regulations	IEC 60947-5-1 / EN 60947-5-73
Operating Temperatures [°C]	-25 / +70
Stock temperature [°C]	-30 / +80
Protection against electrical shocks	Class II - Double insulation
Rated insulation voltage UI [V]	690
Pollution Degree	3
Contact rating secondo UL508	A 600 Q 600
Rated impulse voltage Uimp contacts [kV]	6
Conventional thermal current in air free Ith (θ min 40 ° C) [A (θ	10
Short circuit protection (EU min 500Vac - fuses type gG (gI)) [A]	10
Rated Operational Current Ie - AC-15 (50-60 Hz) [Vac - A]	24V - 6A / 120V - 6A / 400V - 4A
Rated Operational Current DC-13 [Vdc - A]	24V - 6A / 125V - 0.55A / 250V - 0.4A
Max. switching frequency [Cicli/h]	3600
Resistance Between Contacts [mΩ]	25
Connecting Terminals	Screws with cable clamp plate M3.5 (+, -) pozidriv 2
Connecting Cables Dimensions [mm²]	0,75 ... 2,5
Protective Conductor Terminal	/
Marking Terminals	According to IEC 60947-5-1
Mechanical durability (Millions of operations)	30
B10d (millions of operations)	30

PRODUCT DRAWING RELEASE:

Datasheet creation date: 03/09/2025 11:31

Last Modification (geometry): 09/07/2019 05:57



tel. +39 039 9906408
+39 039 9903468
fax +39 039 9906203



Via Novarino 9/L
23899 Robbiate (LC)
ITALY



www.comepi.it
comepi@comepi.it
tecnico@comepi.it