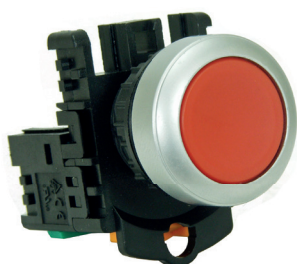


## TECHNICAL DATASHEET

Contact rating	10 Amp 24VAC/DC	Maximum humidity	85%
	6 Amp 230VAC	Dielectric strength	500VAC / 1 min
Initial Contact Resistance	50m Ohm max	Vibration resistance	10-2000Hz
Mechanical life	3,000,000 ops	LED Life	50,000 Hours
Ambient temperature	-20 to +60°C	Cable Terminal Size	1.25mm <sup>2</sup>
Insulation resistance	100M Ohm (500VDC)		

### PB Series 22.5mm Push Button



- IP65 22.5mm Panel Mount
- 10 Amp rated contact
- Snap Fit contacts, easy to install
- Normally Open & Normally Closed contacts
- Supplied complete with contact & coupling
- Colour coded contact blocks
- Up to 8 contacts can be added to 1 Push Button
- UL, CSA, TUV, CCC, CE & UKCA Approved

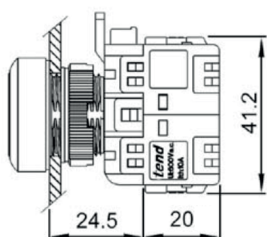
Part No.	Description	Part No.	Description
PB22BFR-1B	Red Push Button with 1 Normally Closed Contact	PB22BFW-1A	White Push Button with 1 Normally Open Contact
PB22BFG-1A	Green Push Button with 1 Normally Open Contact	PB22BFB-1A	Black Push Button with 1 Normally Open Contact
PB22BFY-1A	Yellow Push Button with 1 Normally Open Contact	PB22BFWA-1A	White Push Button with Black Arrow & 1 Normally Open Contact
PB22BFL-1A	Blue Push Button with 1 Normally Open Contact	PB22BFBA-1A	Black Push Button with White Arrow & 1 Normally Open Contact

### PB Series 22.5mm LED Illuminated Push Button

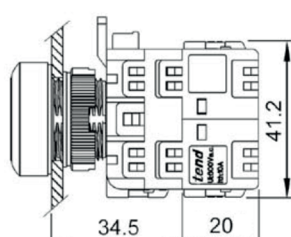


- IP40 22.5mm Panel Mount
- LED Illuminated 24VAC/DC & 230VAC versions
- 10 Amp rated contact
- Snap Fit contacts, easy to install
- Normally Open & Normally Closed contacts
- Supplied complete with contact & coupling
- Colour coded contact blocks
- Up to 8 contacts can be added to 1 Push Button
- UL, CSA, TUV, CCC, CE & UKCA Approved

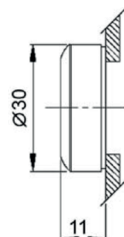
24VAC/DC Part Number	230VAC Part Number	Description
PB22IF7RL-1B	PB22IF2RL-1B	Red LED Illuminated Push Button with 1 Normally Closed Contact
PB22IF7GL-1A	PB22IF2GL-1A	Green LED Illuminated Push Button with 1 Normally Open Contact
PB22IF7YL-1A	PB22IF2YL-1A	Yellow LED Illuminated Push Button with 1 Normally Open Contact
PB22IF7BL-1A	PB22IF2BL-1A	Blue LED Illuminated Push Button with 1 Normally Open Contact
PB22IF7WL-1A	PB22IF2WL-1A	White LED Illuminated Push Button with 1 Normally Open Contact



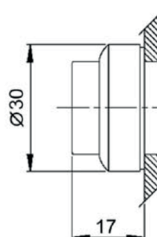
PB22 Series



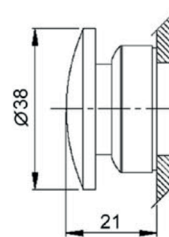
PB22 Series Illuminated



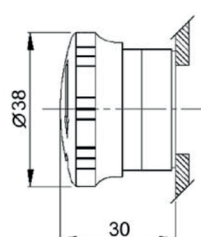
Standard



Latching



Mushroom



Emergency Stop