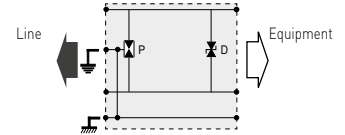
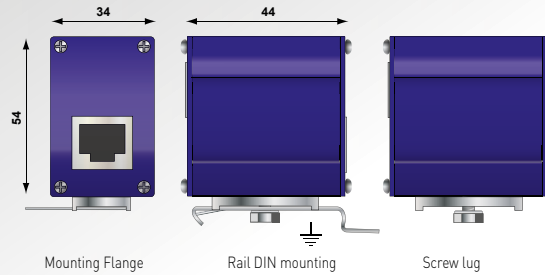
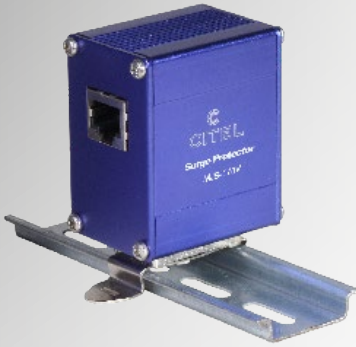


## RJ45 Telecom Surge Protectors MJ8-ISDN, MJ8-170V



# CITEL



P : 3-pole gas tube  
R : Resistor  
D : Clamping Diode

- Protection for one telephone line
- For PSTN, ISDN, ADSL lines
- Quick installation
- RJ45 connectors
- IEC 61643-21 compliance
- UL497A

## Characteristics

CITEL Model	MJ8-ISDN	MJ8-170V
Description	RJ45 surge protector for 1 ISDN line	Surge protector for telephone line 1 to 4-pairs
Network	ISDN	RTC, ADSL2, SDSL, SHDSL, VDSL2 - 4 pairs
Max. data rate	30 Mbps	30 Mbps
SPD configuration	2 pairs + shielded	4 pairs + shielded
Pin outs	2-pairs [3-6][4-5]	4-pairs [1-2][3-6][4-5][7-8]
Nominal line voltage	Un 48 Vdc	150 Vdc
Max. DC operating voltage	Uc 60 Vdc	170 Vdc
Max. Load current <i>[if connection serie]</i>	IL 1000 mA	1000 mA
Max. frequency	f max > 10 MHz	> 10 MHz
Insertion loss	< 1 dB	< 1 dB
Line/Ground Nominal discharge current <i>8/20µs Test x 10 - C2 category</i>	In 2000 A	2000 A
Nominal discharge current Line/Line <i>8/20µs Test x 10 - C2 category</i>	In 500 A	500 A
Impulse current - <i>2 x 10/350µs Test - D1 Category</i>	Iimp 500 A	500 A
Protection level	Up 70 V	220 V
Failsafe behavior	Short-circuit	Short-circuit
<b>Mechanical characteristics</b>		
Dimensions	see diagram	
Format	RJ45 connector	
Connection to Network	RJ45 connector female input/output	
Disconnection indicator	transmission interrupt	
Mounting	Mounting flange, Screw lug, DIN Rail	
Operating temperature	-40/+85°C	
Protection rating	IP20	
Housing material	Aluminium	
Standards compliance	IEC 61643-21 / EN 61643-21 / UL497A	
<b>Part number</b>	560209	560203

