

# Solid State Relay

## KSJ400 Series Single Phase DC Output

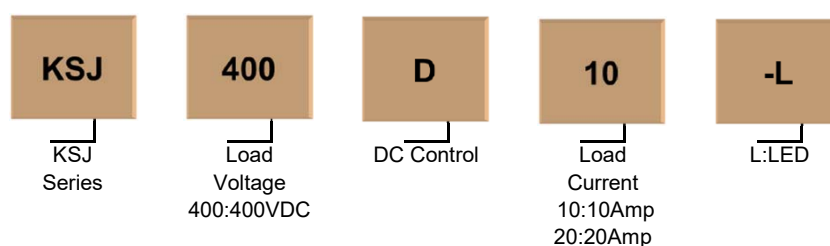


- Ratings 10A, 20A @400VDC
- 4-32VDC control input
- Dielectric strength  $\geq 2500$ VACrms
- Opto-isolation
- LED indication
- RoHS compliant

### Product Description

KSJ400 series is single-phase DC output printed board mounted solid state relay. Control voltage is 4-32VDC, load voltage is 0-400VDC, output current is 10A and 20A. Photoelectric isolation between input and output, dielectric strength  $\geq 2500$ VACrms.

### Product Selection



### Technical Specification

#### Input Circuit

Control Voltage Range	4-32VDC
Minimum Turn-On Voltage	4VDC
Minimum Turn-Off Voltage	1VDC
Maximum Input Current	28 mA @32VDC

#### Output Circuit

Load Voltage Range	0 - 400VDC	
Load Current Range	10A	0.001 - 10A
	20A	0.001 - 20A
Maximum Surge Current (@10ms)	10A	40A
	20A	80A
Maximum Turn-On Time	100μs	
Maximum Turn-Off Time	500μs	
Maximum Off-State Leakage Current [@ Rated Voltage]	0.1mA	
Maximum On-State Voltage Drop [@ Rated Current]	1.5VDC	

## General Information

Dielectric Strength,  
Input/Output/Base (50/60Hz)

$\geq 2500V_{rms}$

Ambient Operating  
Temperature Range

$-30^{\circ}C \sim +80^{\circ}C$

Ambient Storage  
Temperature Range

$-30^{\circ}C \sim +100^{\circ}C$

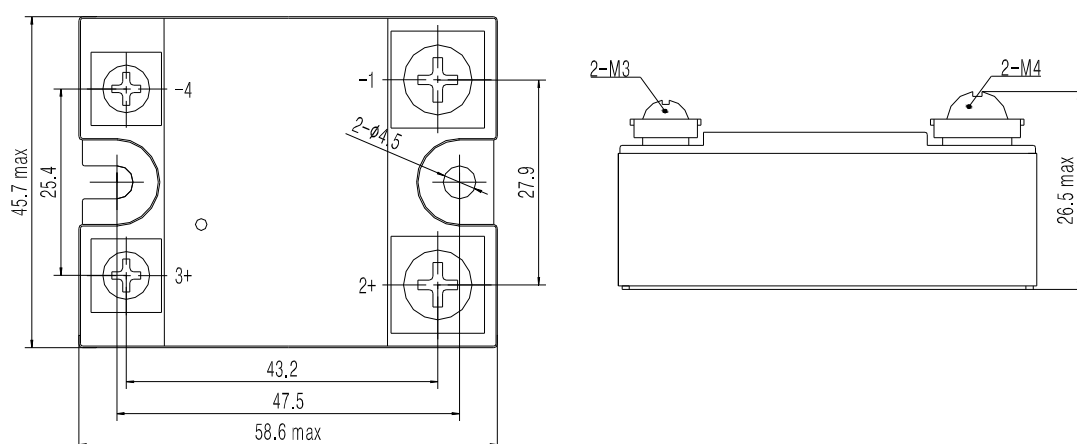
Weight (typical)

80g

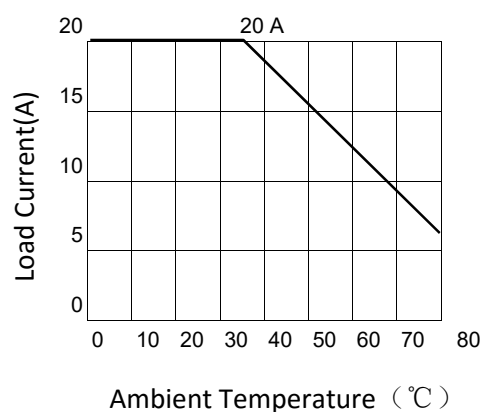
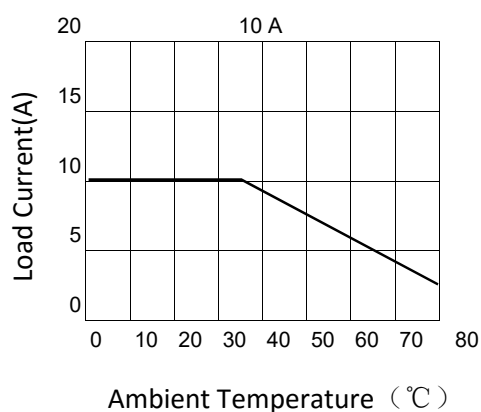
## Application

Suitable for DC heating, DC power, DC valve, DC motor, solar energy and so on.

## Installation



## Thermal Curve



## Important Notice

1. Suppression circuit will be added when used for inductive load.
2. Control polarity shall be correct, or may damage the product.
3. Load current performance will decline when the ambient temperature is over 40 $^{\circ}C$ .

**Product Certification**

