

SENSORS

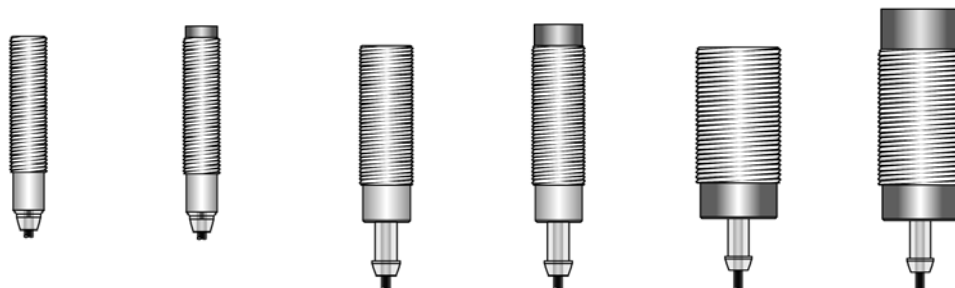
AMPLIFIED INDUCTIVE SENSORS

IS Series

24-230 VAC 2 Wires

NO or NC Output

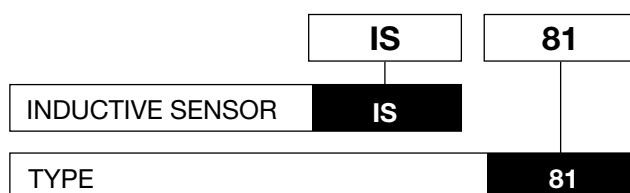
Approved to cULus
and CE



DIAMETER	Ø 12		Ø 18		Ø 30	
Available Versions	Shielded	Not Shielded	Shielded	Not Shielded	Shielded	Not Shielded
Switching Distance (± 20 %)	2 mm	4 mm	5 mm	8 mm	10 mm	15 mm
AC Supply Voltage	24 - 230 VAC (-15 / + 10 %)					
Mains Frequency	50 - 60 Hz					
Hysteresis	< 10 %					
Max. Output Current	300 mA					
Min. Output Current	20 mA					
Max. Current Peak (20Ms)	1,5 A					
Residual Current	< 0.7 mA					
Voltage Drop (Sensor On)	< 5 V (I = 100 mA)					
Operation LED	Present					
Switching Frequency	12 Hz					
Repeatability	≤ 0.02 mm		≤ 0.03 mm		≤ 0.05 mm	
Temperature Limits	-25 - +70 °C					
Protection Grade	IP 67					
Cable Length	2 m					
Cable Section	2 x 0.35 mm ²					
Housing Material	Nickel-plated brass					
Weight (Approximate)	110 g		145 g		210 g	

CONFIGURATION	Ø 12		Ø 18		Ø 30	
NO Output	IS-79	IS-85	IS-81	IS-87	IS-83	IS-89
NC Output	IS-80	IS-86	IS-82	IS-88	IS-84	IS-90

Product Code Example

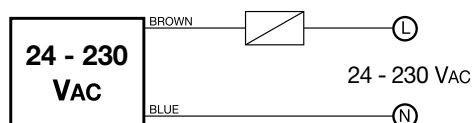


K Connector Output versions and D Extended range versions also available. Please contact the sales office for further details.

Other versions with Metal Face, High Temperature, 4 Wire, Weld Field Immune or Increased Range are also available. Please contact the sales office for further information.

SENSORS

Wiring Diagrams



Warning: This switch is not short circuit protected.

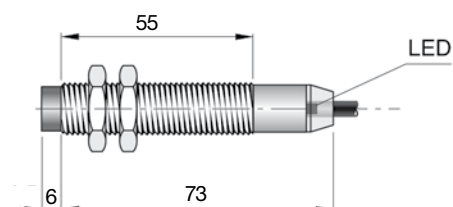
For this reason, during the warranty, any sensor with short circuited output cannot be replaced or repaired without charge.

Dimensions (mm)

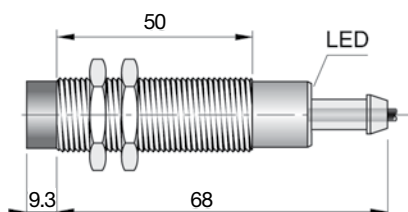
Ø

Configuration with Cable

12



18



30

