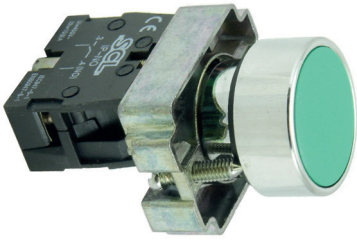


## TECHNICAL DATASHEET

Ambient Temperature	-25 to +55°C	Contact Resistance	<25M Ohms
Pollution Grade	III	Class 1 conforming to	IEC 61140
Rated Insulation Voltage	600VAC	Mechanical Life	100 x 10 <sup>4</sup>
Current Rating	10 Amp resistive	Electrical Life	500 x 10 <sup>4</sup>
Insulation Resistance	>50M Ohms		

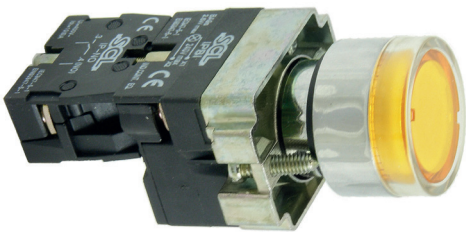
### i Series 22.5mm Push Buttons



- 22.5mm Panel Mount
- 10 Amp rated contact
- Metal bezel & metal coupling
- Normally Open & Normally Closed contacts
- Colour coded contacts
- Supplied complete with contact & coupling
- Quick fit, easy to install
- Manufactured to IEC 60947-5-1
- CE & UKCA Approved

Part Number		Description
IPB-R-01	●	Red Push Button with 1 Normally Closed Contact
IPB-G-10	●	Green Push Button with 1 Normally Open Contact
IPB-Y-10	●	Yellow Push Button with 1 Normally Open Contact
IPB-BL-10	●	Blue Push Button with 1 Normally Open Contact
IPB-W-10	○	White Push Button with 1 Normally Open Contact
IPB-B-10	●	Black Push Button with 1 Normally Open Contact
IPB-WDPB-11	● ●	Dual Red & Green Push Button with 1 NO & 1 NC Contact

### i Series 22.5mm LED Illuminated Push Button



- 22.5mm Panel Mount
- LED Illuminated 24VAC/DC, 110 & 230VAC versions
- 10 Amp rated contact
- Metal bezel & metal coupling
- Normally Open & Normally Closed contacts
- Colour coded contacts
- Supplied complete with contact & coupling
- Quick fit, easy to install
- Manufactured to IEC 60947-5-1
- CE & UKCA Approved

24VAC/DC Part Number		Description
IPBI-R-01-*	●	Red LED Illuminated Push Button with 1 Normally Closed Contact
IPBI-G-10-*	●	Green LED Illuminated Push Button with 1 Normally Open Contact
IPBI-Y-10-*	●	Yellow LED Illuminated Push Button with 1 Normally Open Contact
IPBI-BL-10-*	●	Blue LED Illuminated Push Button with 1 Normally Open Contact
IPBI-W-10-*	○	White LED Illuminated Push Button with 1 Normally Open Contact

\* Insert voltage **230** = 230VAC, **110/230** = 110/230VAC or **24** = 24VAC/DC