

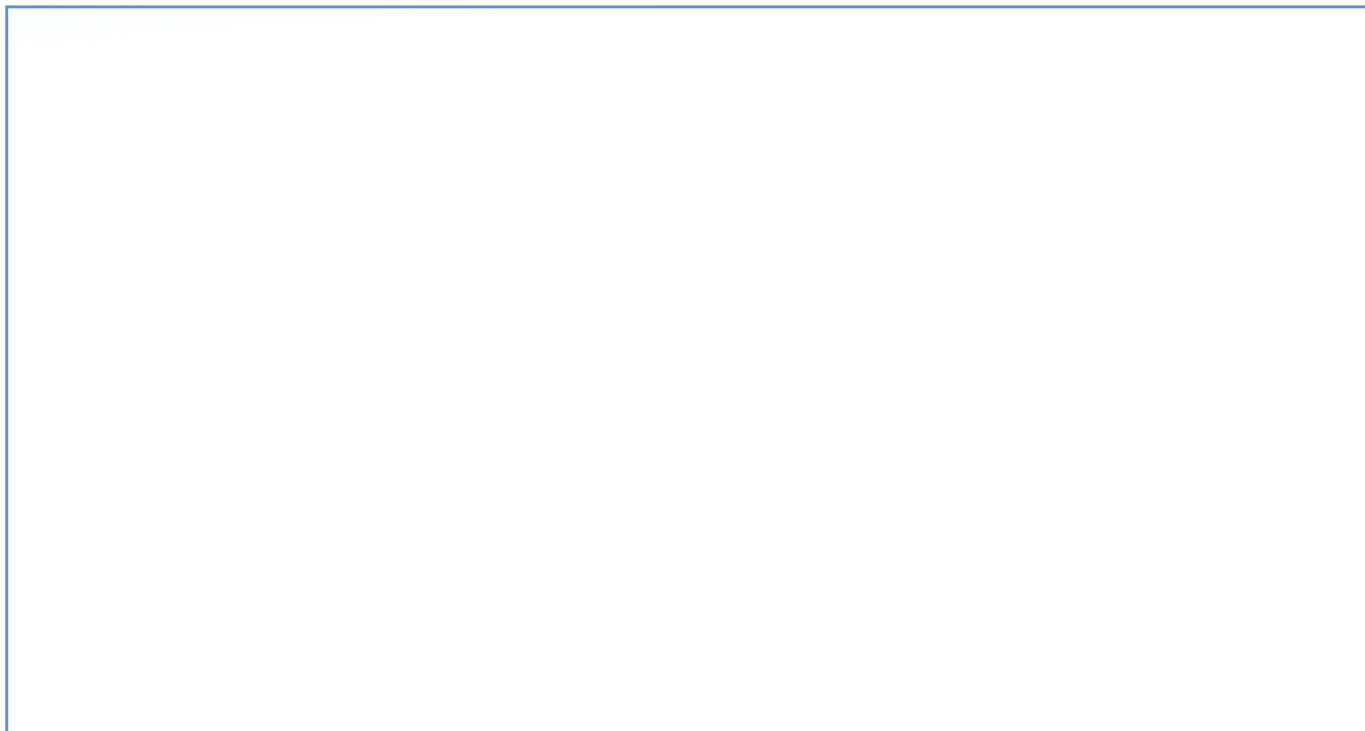
**PRODUCT DESCRIPTION:**

**ECX 1705**

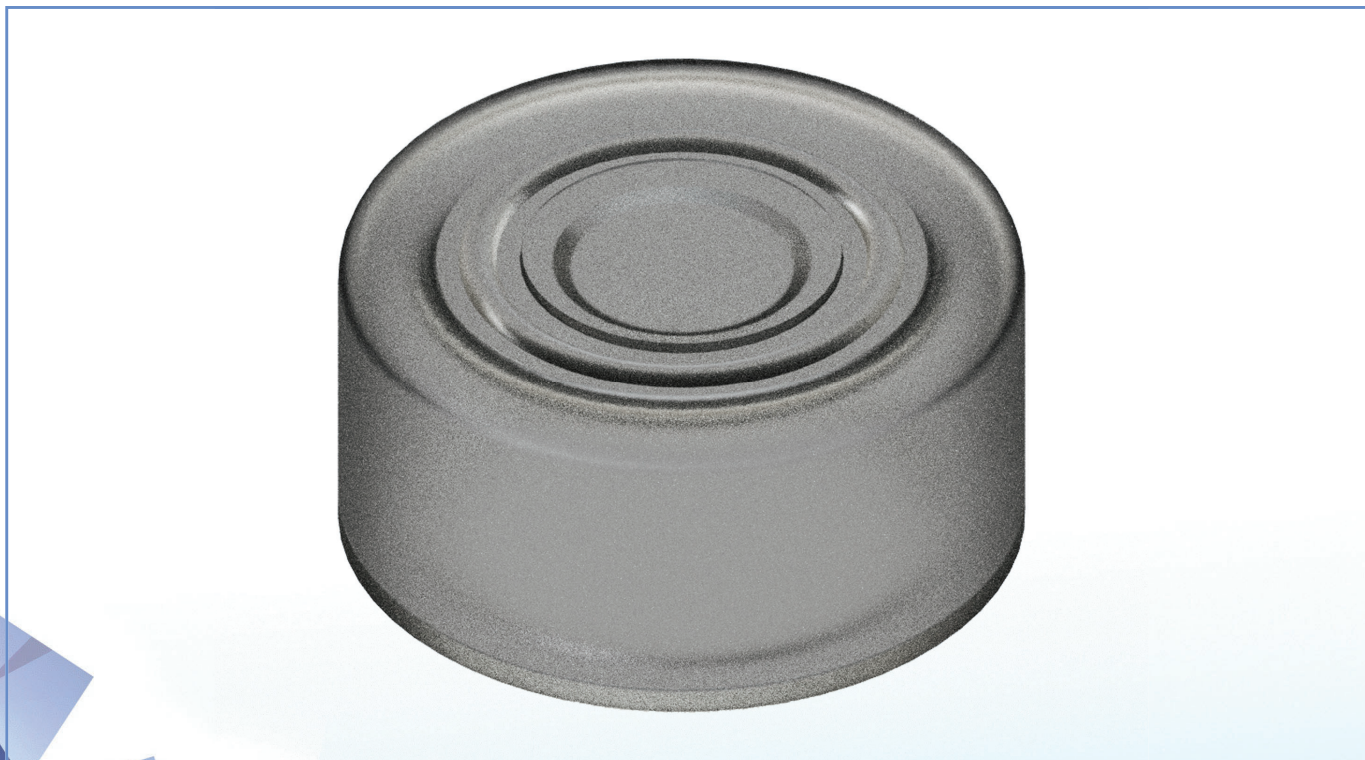
**PRODUCT CODE:**

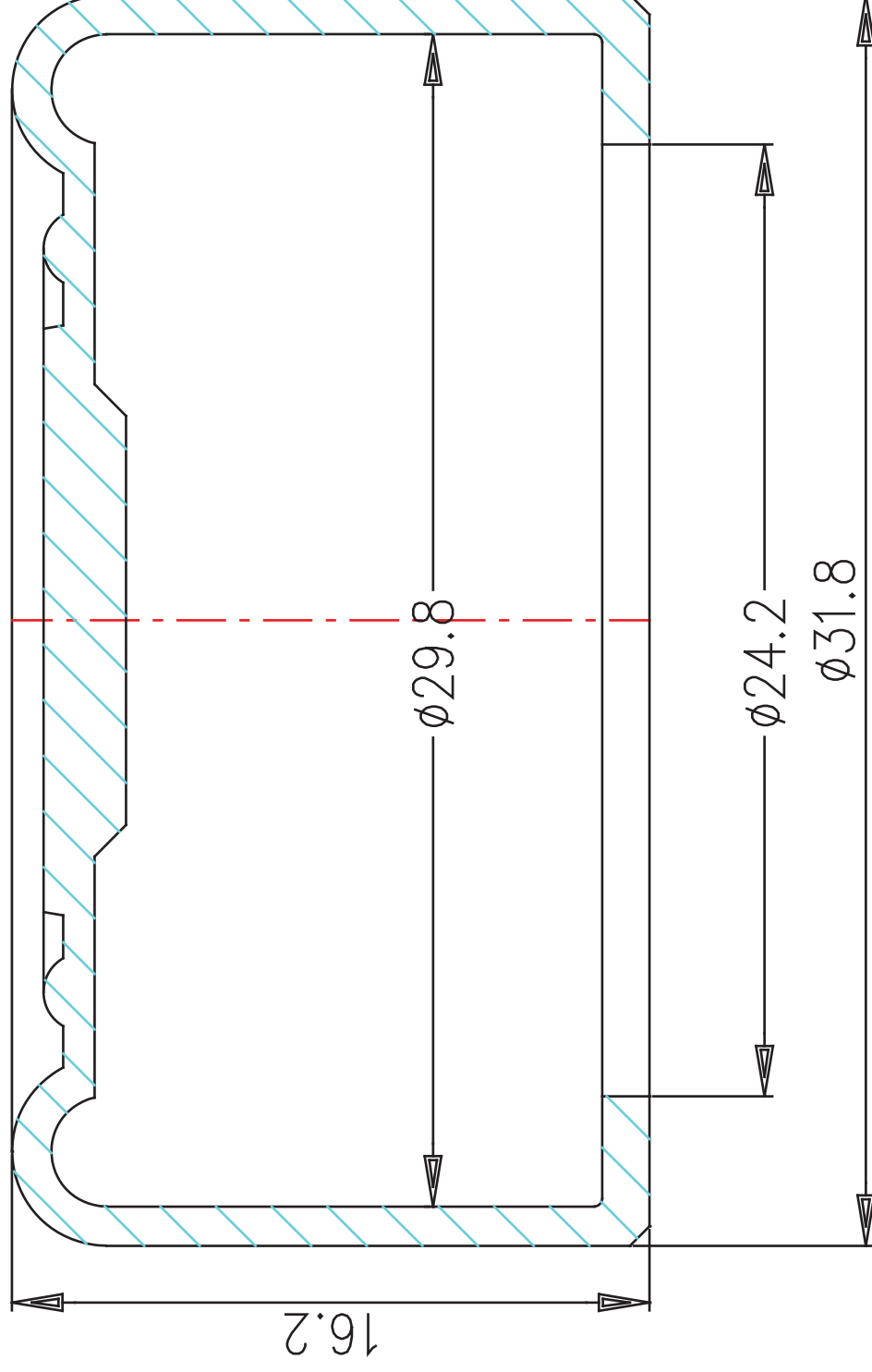
**ECX 1705**

**DYNAMIC 3D VIEW:**



**STATIC 3D VIEW:**



**TECHNICAL VIEW:**

**DETAILS:**

<b>Code</b>	<b>ECX 1705</b>
<b>Description</b>	<b>Protective transparent cup for flush pushbuttons</b>
<b>Material</b>	<b>Silicon rubber</b>
<b>Width [mm]</b>	<b>Ø31.8</b>
<b>Height [mm]</b>	<b>16.2</b>
<b>Mounting</b>	<b>/</b>
<b>IP Degree of Protection</b>	<b>/</b>
<b>Compatible product series</b>	<b>ECX 1000 - ECX 4000</b>

**PRODUCT DRAWING RELEASE:**

Datasheet creation date: 02/11/2023 16:56

Last Modification (geometry): 08/02/2022 09:17

tel. +39 039 9906408  
+39 039 9903468  
fax +39 039 9906203Via Novarino 9/L  
23899 Robbiate (LC)  
ITALY[www.comepi.it](http://www.comepi.it)  
[comepi@comepi.it](mailto:comepi@comepi.it)  
[tecnico@comepi.it](mailto:tecnico@comepi.it)