

Door Switch

DS Range



- > Adjustable positioning without tools
- > High switching capacity
- > Double strain relief
- > Different cladding diameters
- > Suitable for lamp AALGT10 & LED2

The door switch monitors the position of cabinet doors and is available in three versions. For example, it can be used for switching a light when opening a door, or to activate a fan or cooling device when closing a door. The version with change-over contact (CO) can be used as a normally closed and/or normally open contact. The wide mechanical adjustment range of the door switch DS range offers versatile application areas: the housing is adjustable within a 35mm range, while the screw flange with a slotted hole offers an additional 21 mm. The switching travel of the switch itself is another 8mm

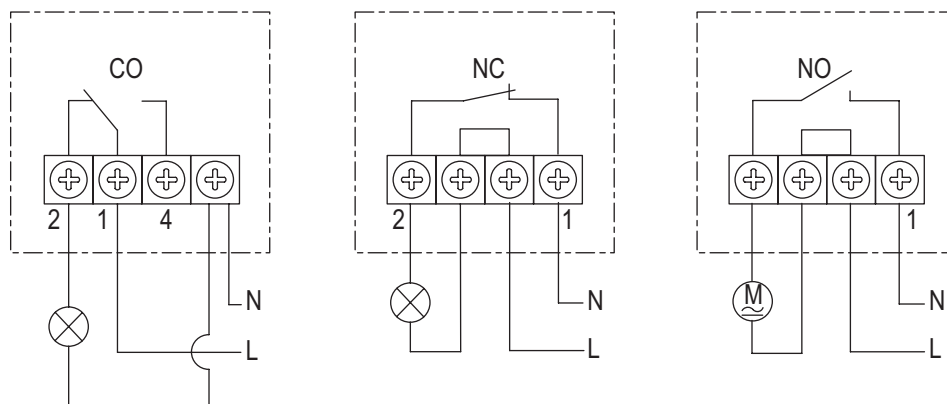
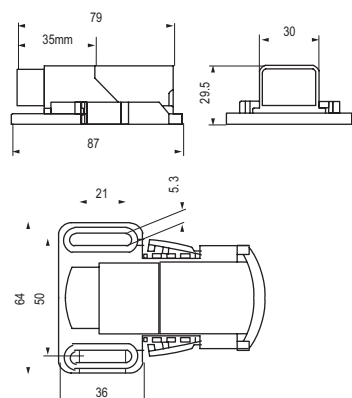
Technical Data

CE RoHS ISO9001 Patent

Door Switch

Max. switching capacity	250VAC, 8 (1.5) A
Service life	VDE: > 10,000 cycles / UL: > 6,000 cycles
Connection	4-pole clamp with strain relief, clamping torque 0.5Nm max.
Mounting	screw fixing (M5)
Casing	plastic according to UL94 V-0, grey/black
Dimensions	87 x 64 x 30mm
Weight	approx. 50g
Operating / Storage temperature	variable
Operating / Storage humidity	-20 to +85°C (-4 to +185°F)
Protection type	max. 90% RH (non-condensing)

Connection Diagrams



Model	Type	Suitable wire
DDS	change-over (CO)	Cable round, stranded wire (with wire end ferrule) 0.75mm ² to 1mm ²
DSNC	normally closed (NC)	Cable round, stranded wire (with wire end ferrule) 0.75mm ² to 1.5mm ²
DSNO	normally open (NO)	Cable round, stranded wire (with wire end ferrule) 0.75mm ² to 1.5mm ²