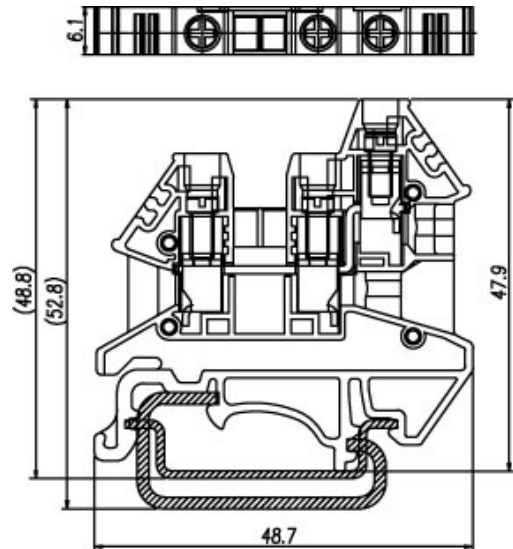
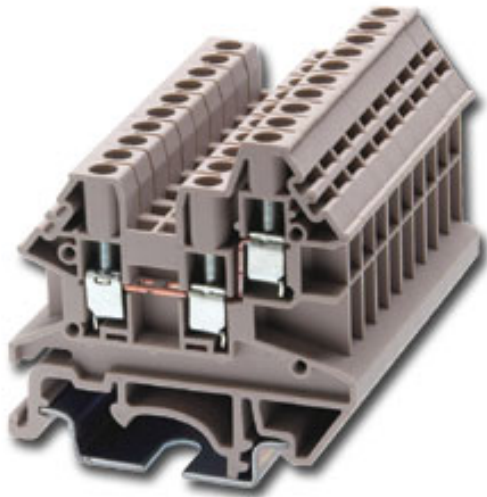








DIN Rail terminal blocks / DK..N-TN series



DK4N-TN



Approval	 	
Technical Data	UL	IEC
Rated voltage	600V	1000V
Rated current	30A	32A
Conductor cross-section, solid (AWG / mm ²)	22~10 / 0.14~4	
Conductor cross-section, flexible (AWG / mm ²)	22~10 / 0.14~4	
Rated impulse withstand voltage	6KV	
Torque (N-m)	0.6	
Screw	M3	
Wire strip length	9~11mm	
Insulating material	PA	
TxHxW (mm)	6.1 x 48.5 x 48.7	
Optional color	Cat. No.	
	DK4N-TN-RD	
	DK4N-TN-BL	
	DK4N-TN-BK	
	DK4N-TN-OR	



	Accessories	Cat. No.
End cover		DK2.5NC-TN
Partition		
Small partition		DKNSPS-001
Insertion bridge	2 way	DSS4N-02P
	:	:
	:	:
Insertion bridge	10 way	DSS4N-10P
	:	:
	:	:
Insertion bridge	2 way	CSC-402PN
	:	:
	:	:
Insertion bridge	10 way	CSC-410PN
Screw-on bridge		
Marking label		TM27
Mounting Rail		TS-35 / TS-32
Tool		