

**DOUBLE**

GY

BK

RD

WH

LT 12/24V ACDC	90372	90454	90373	90374
LT PNP 12/24V DC	90572	90575	90578	90581
MT 40/80V ACDC	90435	90457	90445	90440
HT 120/240V AC	90512	90460	90513	90514

DOUBLE

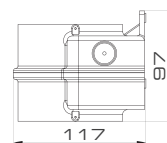
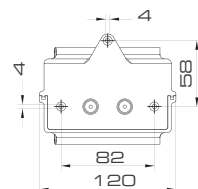
Base designed for lateral/wall mounting, it can mount up to two **MLINE** modules creating unique combinations between visual and acoustic devices whilst the multifunctionality of each module is guaranteed. Also available with PNP (positive-negative-positive) connections for use with PLC in sourcing mode

2 x M20 (ready)

LT



MT-HT

**FLUSH**

RD

WH

LT 12/24V ACDC	90349	90375
MT 40/80V ACDC	90444	90439
HT 120/240V AC	90446	90376

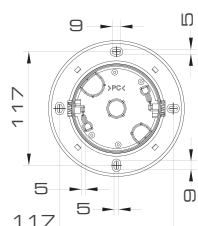
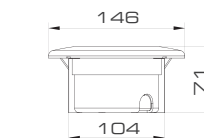
FLUSH

Base designed for flushmounted applications. It guarantees a simple and discrete installation of the device allowing a low visual impact when aesthetic is required like for example in Civil or Commercial installations

LT



MT-HT

**new****POLE**

GY

BK

RD

WH

LT 12/24V ACDC	90610	90613	90619	90616
LT PNP 12/24V DC	90622	90624	90628	90626
MT 40/80V ACDC	90611	90614	90620	90617
HT 120/240V AC	90612	90615	90621	90618
HT JR 120/240V AC	90623	90625	90629	90627

1" NPT-F Adapter
1/2" NPT-F Adapter90555
90556**POLE**

Base designed for pole mounted installations. It allows to install any **MLINE** dome on a 1" 1/2 NPT threaded pole or, via the use of adaptors, on a 1" or 1/2" NPT threaded pole. Also available in Junior version (controls 1 channel only). Also available with PNP (positive-negative-positive) connections for use with PLC in sourcing mode

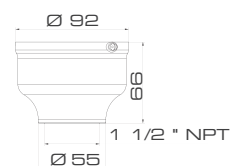
LT



MT-HT



HT JR



PNP BASE